

**March
2021**

**Shelves That Slide, Inc.
www.ShelvesThatSlide.com
1-800-598-7390**



"We Make Your Life Easier!"

Product Catalog Installation & Measuring Guide



Kitchen Accessories

- Custom Pull-out Shelves
- Trash Systems
- Lazy Susans
- Tip-out Trays
- TV Shelves
- Bread Boxes
- Blind Corner Systems
- Tray / Lid Dividers



All custom
shelves are
proudly made
in the USA

ROC#139769

Table of Contents

Cabinet & Mounting Styles	—	—	—	—	—	—	—	—	—	2
Installation	—	—	—	—	—	—	—	—	—	4
Custom Pull-out Shelves	—	—	—	—	—	—	—	—	—	6
Pre-made Wire & Narrow Pull-outs	—	—	—	—	—	—	—	—	—	7
Drawer Organizers	—	—	—	—	—	—	—	—	—	8
Trash and Recycle Systems	—	—	—	—	—	—	—	—	—	9
Lazy Susans	—	—	—	—	—	—	—	—	—	10
Blind Corner Systems	—	—	—	—	—	—	—	—	—	12
Tip-out Trays	—	—	—	—	—	—	—	—	—	12
Wire Accessories	—	—	—	—	—	—	—	—	—	13
Slides & Hardware	—	—	—	—	—	—	—	—	—	14

Policies

Ordering

You may place your order through our secure website at ShelvesThatSlide.com, by phone at 1-800-598-7390, by fax at 1-800-598-7390, or by mail with your payment.

Payment

We accept Visa, MasterCard, American Express, money order or personal check. If paying by check, your order will be delayed until the check clears your bank.

Shipping

Premium shelves usually ship within two to three weeks while standard and economy shelves usually ship within one week. Other available products ship within two to three days unless otherwise noted. Our online store at www.ShelvesThatSlide.com will provide you with the order's shipping cost upon entering your order and zip code. Free shipping applies to the contiguous United States on **custom shelf** orders of \$500 or more; wire shelves, accessories, trash systems, and lazy susans do not qualify.

Return Policy

In the event a return is necessary, you may call us at 1-800-598-7390 to obtain the required return authorization number. All items must be returned in its original packing in an unused and unaltered condition. If we have made a mistake in fabrication, we will replace or accept the item at no cost to you.

Cancellation

If you cancel your order before it goes into production, you will not be charged a 25% cancellation fee.

Premium Shelves

Our most popular shelf, premium shelves are constructed with lacquered 9-ply Baltic Birch and a vinyl covered 1/4" bottom. This shelf has a 100-pound capacity and is made with rabbeted joints to provide extra strength. Available in different heights from 2 ³/₈" to 9 ⁷/₈" Tall.

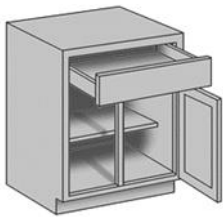
New Line and Economy Shelves

Also constructed with Birch, these shelves are neither lacquered nor rabbet jointed. New Line shelves will hold up to 75 pounds. Economy shelves are made of 5/8" thick melamine with your choice of maple or oak hardwood fronts.

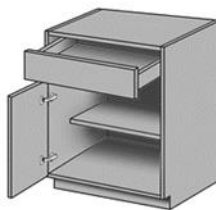
Slides

All shelves are shipped with the recommended Blum 3/4 extension slides and meet the needs of most customers and cabinet types. Ball bearing soft-close and Blum full extension slides are available at an additional cost. Both Blum slides include a lifetime warranty.

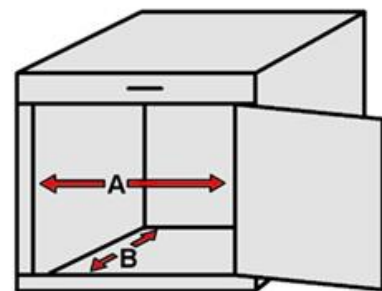
Cabinet & Mounting Styles



Framed cabinets have drawers and doors that close on the face frame; the face frame is generally seen between the cabinet drawers. These cabinets have no front frame; the front edge of the cabinet is the side, top, and bottom.



Frameless cabinets, also called Euro-style cabinets, have no front frame. If you have a frameless cabinet with one door, you will either need to remove the L brackets and mount the slide directly to the sidewall or deduct 1/4" from the opening dimension to allow for the L brackets.



Dimension "A" is the clear opening width. The clear cabinet opening is the measurement obtained after allowances for hinges, conduit, or other obstructions.

Dimension "B" is measure from the back of the cabinet face frame to the back wall. Cabinet depths are available in 2" increments to match the length of the slide hardware.

There are four methods of mounting. The easiest and most common method is the base mount. It is used for mounting our shelves to an existing full shelf or cabinet base; the slides will include four L brackets. If you have an upper shelf that is only 8" to 12" deep, you can use the half-shelf mount. The half-shelf mount includes L brackets on the rear of the shelf while the front of the slides are attached to the cabinet face frame or sides. If you do not have an existing shelf to mount to, you will need to use either the rear mount or side mount methods.



Base Mount

Used for mounting to an existing full shelf or cabinet base, base mounting is the easiest and most common method and works with both full and $\frac{3}{4}$ extension slides. For frameless cabinets with one door, you will need to deduct $\frac{1}{4}$ " from the clear opening width to allow for the L bracket and screws.



Half-shelf Mount

Half-shelf mounts should be your choice if you have a shallow shelf in the rear of your cabinet and work best with $\frac{3}{4}$ extension slides. Make sure to measure the opening width at the height of the half-shelf.



Side Mount

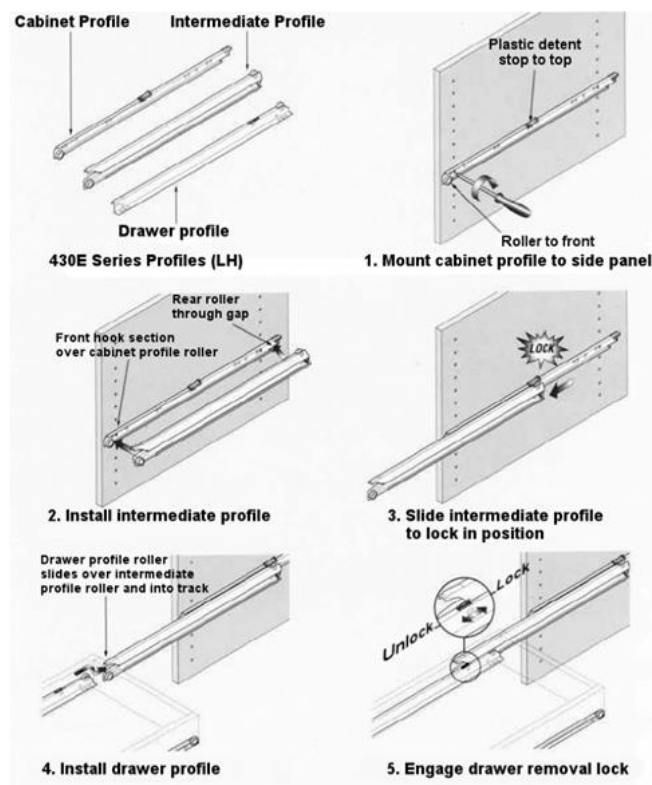
With the side mount, the slides will attach to the cabinet sidewalls using spacers or wood build-up. If you are installing multiple shelves in a closet or pantry, using wood build-ups is recommended.



Rear Mount

Plastic sockets are mounted to the end of the sliding hardware and are attached to the cabinet's back wall; the back wall must be thick enough to support the slides. The front of the slide is attached to the cabinet face frame as with the half-shelf installation.

Please note that rear mount sockets **will not** work with full extension slides.



Full-Extension Slides

Blum 3/4 Extension Slides

The back of the shelf is the end with the wheels. On $\frac{3}{4}$ extensions slides, there are two parts for each side. The shelf member comes attached to the shelf and the cabinet members will be wrapped together. The right side of the slides are the control side. Both parts of the right-side slides have the metal bent to hold the wheel captive when it is sliding. The left-side slide members are flat and allow the slides some tolerance. When you are installing the shelves, you should look at the left-side slide when checking adjustment; any problems with slide alignment will show on the left side.

Blum Full-Extension Slides

Full extension slides have three parts for each side: a cabinet, drawer, and intermediate profile. The cabinet and drawer profiles have locking plastic tabs. Tip the intermediate profile on to the cabinet member as in Figure 2. Extend the intermediate profile to install the drawer.

Installation

These instructions are offered as a guide for installing pull-out shelves and are not intended to offer every detail for every possible installation. It is expected that the home improvement do-it-yourselfer has sufficient knowledge and aptitude to judge the soundness of the shelf installation.

For assistance with measuring and installation, please visit us at ShelvesThatSlide.com —> products —> help & how-to guides.

If you are installing your pull-out shelf on your cabinet base or a permanent full shelf within your pantry or closet, you may go straight to installing the slides. If the shelf is adjustable, we recommend replacing your plastic shelf clips with the metal clips (Page 14) that we have available for purchase.

Please keep in mind that the front mounting of the shelf will be subjected to twice the weight once you install the pull-out shelf. You might consider placing a few screws into the back or sidewall right above the existing shelf as an added precaution against tipping; just be sure that the walls are thick enough to keep the screw from going through the exposed wall.



We include one door protector for each shelf up to 21" wide and two for larger shelves. The door protector is mounted to the side of the shelf. The protector sticks out about $\frac{1}{16}$ " past the drawer slide and keeps the shelf from potentially scratching the door. Screw the door protector to the side of the shelf with one screw. Be careful of the hinge clearance and if the door has a recessed panel, make sure you mount the protector as low as possible.

Base Mount

For a full shelf or base installation, you will have two L brackets on each cabinet slide. The wheeled end of the slide to be installed in the cabinet is the front. Set the



slides onto the existing shelf or cabinet base at the approximate width of the sliding shelf. It is most important to get the right side in place; you can slip the left side into place after getting the right side in properly. Insert the shelf into the cabinet and align the front end of the shelf for squareness and proper set-back. When you have the shelf adjusted, press down slightly, and slide the shelf forward just far enough to expose the rear brackets. Using the bracket hole that goes side-to-side, insert a screw, slide the shelf back into place and check the alignment; repeat on other side. If all is well, you can carefully slide the shelf without disturbing the position of the front brackets. Install screws in the front brackets in the same manner you did for the rear. After everything is aligned, remove the shelf, and install a screw in the bracket's center hole to lock it in place.

Half-Shelf Mount

For half-shelf installations, you will need a small level. Check the existing shelf to make sure it is secure and cannot lift up. The slides for your half-shelf installation will

have one L bracket mounted toward the rear; the wheeled end is the front. Set the rear bracket on the existing shelf, place the front edge of the slide against the face frame about $\frac{3}{16}$ " from the front, and place your level on the slide to level it. Once level, mark the location of the front hole in the slide. Measure the height and make a corresponding mark on the other side. Drill a small pilot hole to prevent splitting. After the front of the slides have been attached, you can set the shelf in place by lifting the wheels on the rear of the shelf slides over the front wheels of the cabinet slides. Insert the shelf all the way into the cabinet and align the shelf to be square with the cabinet front. If there is too much space between the face frames, you will need to insert spacers, washers, or wood buildouts. Once the left slide is properly aligned, press down slightly on the shelf, and extend it far enough to see the rear bracket. Place a screw in one of the slotted holes and tighten moderately. When alignment is correct, repeat the process and insert a screw in the left bracket. Once everything is aligned, extend the shelf again and place a screw in each bracket center hole to lock it in place.



Rear Mount

For rear mounting, you must specify a rear socket installation when ordering. Determine the height for the shelf and mark both cabinet face frames for the bottom of the shelf. Insert the cabinet slides partially into the plastic sockets.

Attach the front end of the slides (wheeled end) to the marked cabinet face frame. You will need to push the slide slightly against the back wall of the cabinet to seat the socket to the needed depth. Install the shelf by lifting the rear end of the shelf slides over the wheels on the front of the cabinet slides, slide the shelf in completely, and align it to be square with the front of the cabinet. Mark a line on the back wall for the position of each slide for the horizontal placement. Remove the shelf and place a level on the cabinet slide. Align the slide with the previous line marked and level the height. Now you can either install one screw in the socket or mark another line for the vertical position. Repeat for the other side and reinstall the shelf and check for proper operation. Once you have the shelf adjusted, install at least one more screw in each socket. If the shelf does not slide smoothly, make sure the slides are parallel to each other and not twisted.



Side Mount

For side mounting, we recommend that you install vertical strips of wood on both sides of the cabinet sidewalls; one near the front and one near the back. The sidewalls are

usually not more than $\frac{1}{2}$ " thick, and without the added support of wood buildouts, leverage will cause a weak installation and increased shelf stress. It is best to use a piece of wood that is the same thickness as the space behind the face frame. You can glue and screw the wood in place to make a secure attachment. After the wood is installed, measure up and make a mark where you want the slides installed. Simply screw the slides in where marked and install the sliding shelf by lifting the rear end of the shelf slides over the wheel on the front end of the cabinet slides.



Custom Pull-out Shelves

***** Free Shipping on all Custom Pull-out Shelf orders over \$500 *****

Only available within the contiguous USA

Please read our measuring and installation guides before ordering. Our Premium custom shelves have a lifetime warranty and include door protectors plus the hardware appropriate for your selected mounting style. Opening widths vary and are available in 1/16" increments. Shelves from 21 3/4" to 25 3/4" will come with 22" slides; shelves that exceed 27 3/4" require full extension slides.

Additional charges for extra widths and depths may occur; please see our website for current pricing on all products. Spacers are not included.



AS23SS – Premium, 2 3/8" tall
\$59.95

Our most popular shelf, available widths 6" to 39" and depths in 2" increments from 9 3/4" to 23 3/4".



AKDR623 – Premium Kitchen Drawer Replacement, 3 1/2" tall
\$69.95

Perfect for cutlery, pot, and pans, available widths 6" to 35" and depths in 2" increments from 11 3/4" to 23 3/4".



AM47SS – Premium Medium High Pull-out, 4 7/8" tall
\$79.95

Great for containing plastic ware, available widths of 6" to 35" and depths in 2" increments from 9 3/4" to 35 3/4".



AT97SS – Premium Tall, 9 7/8" tall
\$99.95

Best for storing larger items, available widths 6" to 35" and depths in 2" increments from 9 3/4" to 25 3/4".



AS2373 – Slant, 2 3/8" to 7 3/8" tall
\$89.95

Shorter front for access, higher back to prevent tipping, available widths 6" to 32" and depths in 2" increments from 9 3/4" to 25 3/4".



ABD73SS – Bread Drawer, 7 3/8" tall
\$99.95

Sliding top keeps bread and pastries fresher, available widths 6" to 26" and depths in 2" increments from 9 3/4" to 25 3/4".



AS58EWH – Economy pull-out
\$39.95

Used for keyboards, available widths 6" to 26" and depths in 2" increments from 10 1/4" to 26 1/4" with oak or maple accent.



ASNL624 – New Line, 2 5/8" tall
\$49.95

No lacquer or joinery, available widths 6" to 26" and depths in 2" increments from 9 3/4" to 25 3/4", 75 pound capacity.



ASCP – Caddy Shelf, 9 7/8" tall
\$34.95

Designed to bypass pipes, it screws to the inside of our premium shelves. Available widths of 6" or 8", depths of 17 3/4", 19 3/4" or 21 3/4".

Pre-made Wire & Narrow Pull-outs



4W-DB 12 12" Pull-out Shelf \$58.50

Measures 11" wide, 18 1/2" deep, 5 5/8" tall. Fits cabinets with a minimum opening of 12" and a depth of 19".



RV5WB1

Single tier chrome finished wire basket provides sturdy support for your cookware. Full extension slides are rated for 100 pounds and includes installation hardware. Shelves are 7" tall with bottom mounting. Listed width represents the cabinet opening, not actual shelf size.

9" wide X 18" deep	\$39.25	12" wide X 18" deep	\$42.40
12" wide X 22" deep	\$52.34	15" wide X 22" deep	\$58.22
18" wide X 22" deep	\$62.32	21" wide X 22" deep	\$69.07



RV5WB2

Two tier chrome finished wire baskets provide sturdy support for your heaviest cookware. Full extension ball bearing slides are rated for 100 pounds and includes installation hardware. Unit is 19" tall and requires a minimum 19 1/4" opening. Listed width represents the cabinet opening, not actual shelf size.

9" wide X 18" deep	\$88.35	12" wide X 18" deep	\$97.58
12" wide X 22" deep	\$108.26	15" wide X 22" deep	\$110.62
18" wide X 22" deep	\$119.99	21" wide X 22" deep	\$130.23

18" deep units require at least 18 1/8" of cabinet depth. The 22" deep units require a cabinet depth of at least 22 1/8". Mounts to cabinet base, face frame, and rear wall.



Make use of the dead space behind your existing filler panel!

Base fillers – Perforated stainless-steel panel comes with an assortment of pegs and hooks.

434-BF-3SS \$267.80

3" wide X 23" deep X 30" tall

434-BF-6SS \$298.45

6" wide X 23" deep X 30" tall



3 adjustable shelves are great for storing small items like spice jars.

432-BF-3C \$97.57

3" wide X 11 1/8" deep X 30" tall

432-BF-6C \$120.71

6" wide X 11 1/8" deep X 30" tall



This Maple, natural finished unit is perfect for narrow wall cabinets. Contains one 3-tier pull-out on full extension slides.

Both units are 10 3/4" deep and 26 1/4" tall and require a cabinet depth of 10 7/8" and 26 3/8" tall cabinet opening.

448WC \$98.53

5" requires 5 1/8" opening

448WC \$111.32

8" requires 8 1/8" opening

Drawer Organizers



DODT50-21WH

Insert is custom cut to fit inside your drawer and arranges your small to medium spice bottles. Your drawer must be a minimum of 4" tall. Specify inside drawer width and depth and we will cut the insert to fit your measurements.

Available from 4" to 50" wide 4" to 9" wide \$17.87 Add \$1 to every inch over 9" wide
6" to 21" deep



DORV4SD1

Birch and Maple hardwood spice insert has a UV-cured coat finish. Unit comes as stated size; you trim to fit your drawer. Insert is 1 1/2" tall.

16" wide X 19 3/4" deep \$54.17 22" wide X 19 3/4" deep \$53.82



DORV4WCT-1

Birch and Maple hardwood spice insert has a UV-cured coat finish, trim to fit with simple drop-in installation. Insert is 2 1/8" tall.

14 5/8" wide X 22" deep \$34.18 20 5/8" wide X 22" deep \$45.98



DORV4WUT-1

Organize kitchen drawers with ease. Trim-able wood tray is a simple drop-in installation. Unit is 2 7/8" tall.

18 1/2" wide X 22" deep \$35.30 24" wide X 22" deep \$44.44



DORV4KCB-18

Replace your drawer with this combination knife holder & cutting board. Uses your existing drawer front and includes full extension ball bearing slides with mounting hardware. 3 divided sections include 7 slot knife holder. Units are 4 3/4" tall.

14 1/2" wide X 22 3/4" deep \$212.04 17 1/2" wide X 22 3/4" deep \$224.58
20 1/2" wide X 22 3/4" deep \$244.01



DORV4WKB-1 \$54.81

Maple UV-coated knife drawer provides up to 19 slots for knives and has a separate compartment for additional utensils. Simple drop-in installation saves valuable countertop space. Tray is 18 1/2" wide and can be trimmed as small as 3", depth is 22" and can be as small as 8". Unit is 2 7/8" tall.

Trash and Recycle Systems



TR-814B
\$37.33 20 qt
8 ⁵/₈" w X 15 ⁷/₈" d X 15 ⁷/₈" tall
Base mount, full extension



TR5349-15DM1-WH
\$207.50 35 qt
10 ⁷/₈" w X 22 ¹/₈" d X 20" tall
Base mount, full extension



TR4WCTM-12DM-1
\$92.26 35 qt
12" w X 22" d X 17 ⁷/₈" tall
Side mount, drop-in, door mount included



TR4WCTM-1550DM-1
\$106.92 50 qt
12" w X 22 ⁵/₈" d X 21 ⁵/₈" tall
Side mount, drop-in, door mount included



TR12PB-LE
\$87.33 35 qt
10 ⁵/₈" w X 16 ¹/₈" d X 20 ¹/₂" tall
Side mount, drop-in, door mount included



TR12PBWH
\$64.41 35 qt
10 ⁵/₈" w X 22" d X 19 ¹/₈" tall
Base mount, full & ³/₄ extension, optional door mount



TR12PB-50SWH
\$93.34 50 qt
12 ¹/₄" w X 22" d X 24 ¹/₄" tall
Base mount, lid, full extension optional door mount



TR15PB2SWH
\$79.93 54 qt
12 ¹/₄" w X 22" d X 19 ¹/₂" tall
Base mount, double bin, full extension, optional door mount



TR9PBWH
\$58.63 30 qt
10" w X 22" d X 20" tall
Base mount, ³/₄ extension optional door mount



TR4WC-15DM1
\$171.80 35 qt
12 ¹/₂" w X 18 ³/₄" d X 20 ¹/₂" tall
Base mount, full extension door mount included



TR18PB2WH
\$82.97 70 qt
14 ⁵/₈" w X 22" d X 19 ¹/₄" tall
Base mount, double bin, full extension, optional door mount



TR18PB1WH
\$66.54 35 qt
15" w X 22" d X 20" tall
Base mount, ³/₄ extension optional door mount



TR5349-18DWH
\$289.70 70 qt
15" w X 22" d X 20" tall
Base mount, full extension door mount included



TR80104-WH
\$88.57 15 liter
15 ¹/₂" w X 10" d X 16 ¹/₂" tall
Pivot door mounted, lid and removable bin



TR80103-SS
\$105.89 15 liter
 15 1/2" w X 10" d X 16 1/2" tall

Pivot door mounted, lid and removable bin



TR4WC-18DM2
\$162.12 70 qt
 15 1/2" w X 22" d X 20 1/2" tall

Wooden base mount, full extension, door mount included



TR5349-21
\$252.35 100 qt
 15 5/8" w X 22" d X 20 1/2" tall
 Wooden base mount, full extension, door mount included



TR87004-WH
\$138.17 20 qt
 15 3/4" w X 16" tall
 Pivot door mounted, no lid



TR14PBSWH
\$70.39 20 qt
 14 5/8" w X 16" d X 16 3/8" tall
 Base mount, rear storage, full extension, optional door mount



TR4WCTM-27-4
\$173.66 108 qt
 24" w X 22 5/8" d X 18" tall
 Front, side and rear mount, full extension, four 27 qt bins



TR1024W-27
\$18.95 27 qt
 11 3/8" w X 11 3/8" d X 17 3/4" tall



TR6700-61WH
\$15.95 30 qt
 9 3/8" w X 15 3/8" d X 17 7/8" tall



TR35-52
\$19.37 35 qt
 14 7/8" w X 10 1/2" d X 17 7/8" tall



TRDMKITWH \$20.25
 Door mount kit for select trash pull-out systems

Lazy Susans



This two-layer full circle lazy susan is designed for use in corner wall and base cabinets and features two rotating polymer trays; both trays turn together. Fits cabinet heights from 24" to 32" and includes trays, telescoping center shaft, top and bottom pivots, and screws.

FCLS6012-18 (18" dia)

\$51.72 white \$57.40 almond

FCLS6012-20 (20" dia)

\$56.19 white

FCLS6012-24 (24" dia)

\$61.36 white \$67.05 almond

FCLS6012-28 (28" dia)

\$84.55 white \$88.73 almond

FCLS6012-32 (32" dia)

\$152.32 white



Three tray set fits cabinet heights from 36" to 42". Kit includes three trays, telescoping center shaft, top and bottom pivots, and screws.

FCLS6013-18 (18" dia)

\$86.98 white \$79.83 almond



D-shaped five tier fits in 24" deep cabinets and adjusts to fit heights of 56" to 62". Each shelf rated to 32 lb nominal load.

DSLS6265-22WH (22" dia)
\$257.83



D-shaped two tier features independent shelf rotation and a 1 1/4" high tray retainer. Fits cabinets from 26" to 32" high and includes two shelves, telescoping center shaft, and mounting hardware.

DSLS7012-20WH (20" dia)
\$57.71 white



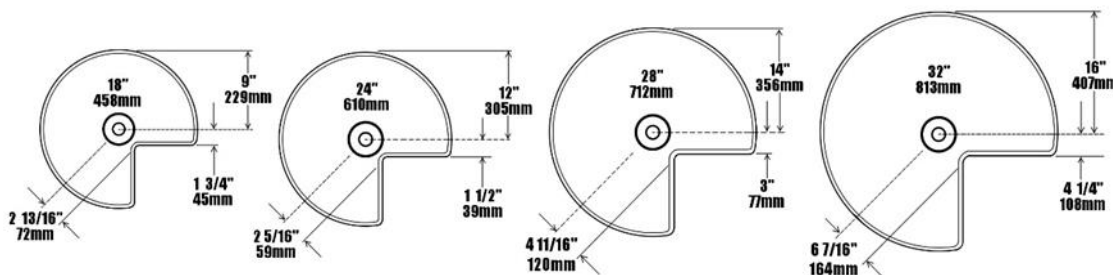
D-shaped three tier features independent shelf rotation and a 1 1/4" high tray retainer. Fits cabinets from 37" to 46" high and includes three shelves, telescoping center shaft, and mounting hardware.

DSLS7013-20 (20" dia)
\$88.82 white \$92.41 almond

Kidney-shaped two tier features independent shelf rotation and exclusive cantilevered ribbing allows maximum support and deflection. Shelves can be relocated on post by loosening locking screws. Provides 15/16" clearance between the cabinet floor and bottom shelf. Fits cabinets from 26" to 32" high and includes two shelves, telescoping center shaft, and mounting hardware.

KALS6472 For double hinged corner doors

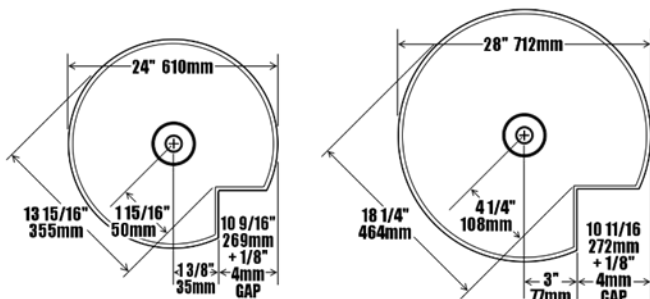
18" white	18" almond	24" white	24" almond	28" white	28" almond	32" white	32" almond
\$92.94	\$91.07	\$75.36	\$75.36	\$88.65	\$100.54	\$107.68	\$103.76



Pie-cut for door mount offers polymer components for quieter action. A single screw is used for adjustment of the doors with full 360° rotating alignment. Simple height adjustment by clip with thumb and forefinger. Telescoping hardware is 24" long and extends to 31". Includes shelves, pivot, cam, telescoping post, hardware, and instructions.

PSLS6942 For doors that attach directly to lazy susan

24" white	24" almond	28" white	28" almond
\$70.67	\$63.60	\$78.87	\$85.30



Blind Corner Systems

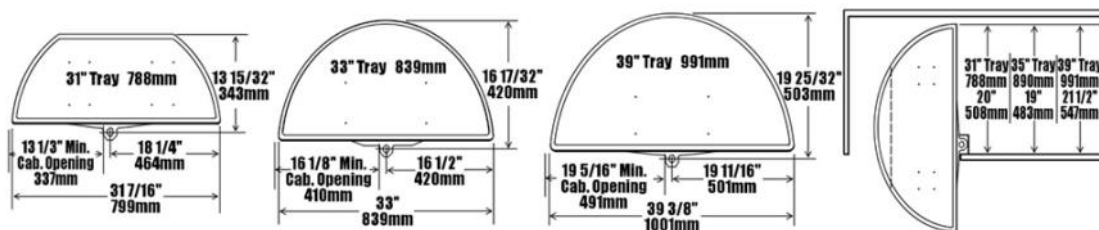
The strongest blind corner lazy susan unit available has polymer bushing surrounding all rotating bearing areas for super quiet performance. Two mounting brackets included to accommodate frame and frameless cabinetry.

BC6862-31 One pivot and one pivot & slide out

13 1/4" door opening	16 1/8" door opening	19 1/4" door opening
\$166.75 white \$169.36 almond	\$175.89 white	\$187.35 white \$178.63 almond

BC6882-31 Two shelf, both pivot and slide out

13 1/4" door opening	16 1/8" door opening	19 1/4" door opening
\$158.08 white \$158.08 almond	\$165.59 white \$190.32 almond	\$180.31 white \$207.25 almond



The Blind Corner Optimizer by Rev-A-Shelf lets you access that tricky blind corner cabinet. This item is universal and will work on either a right or left-handed door. Store kitchen items with ease using the four chrome baskets and full extension slides that allow the optimizer to be completely pulled out of the cabinet.

Both units are 20 1/4" deep X 17 3/4" tall

RV5PSP15 \$341.26 15 3/4" model requires a minimum 15 3/4" wide opening.

RV5PSP18 \$369.63 17 3/4" model requires a minimum 17 3/4" wide opening.



Tip-out Trays



An affordable alternative to standard tip-out trays, this white molded polymer tray uses your own standard hinges.

TO6561

11" wide

\$2.95

14" wide

\$2.95



This tip-out tray includes 2 trays and 2 pairs of hinges. One tray has a post to hold your ring while washing dishes.

TO6572

11" wide

\$20.25 white

\$20.14 almond

14" wide

\$20.35 white

\$20.34 almond



This 36" tray can be cut to your exact size. Unit includes 36" tray, one cap kit (2 caps), one pair of hinges, glue, and mounting hardware. Tray is 3 5/16" tall in back, 2" tall in front, and 2 7/16" deep.

TO6651-599

\$20.65 white

\$20.65 almond

\$32.52 unit with extra hinges and end caps

Please recycle – pass this catalog on to a friend when finished!



<u>T06542WH</u>	Requires 1 $1\frac{1}{16}$ " clearance and includes two white, slim trays and two pairs of hinges.	11" wide \$22.48	14" wide \$22.58
<u>T06541-36</u>	Tray only, does not include hinges or endcaps. Requires 1 $1\frac{1}{16}$ " depth.	36" wide \$12.61	
<u>T06542-WH</u>	One pair of hinges and end caps, no tray included.	\$12.62	
<u>T06541-50</u>	Includes one white polymer 36" tray with choice of one or two pair of end caps. Requires 1 $1\frac{1}{16}$ " clearance.	1 pair hinges, caps \$19.84	2 pair hinges, caps \$32.97



This classic stainless-steel tray features smooth folded-over edges with a protective, polished finish. Includes one tray and requires hinges that are sold separately.

TO6581-SS

10" \$7.98	11" \$8.65	13" \$9.77	14" \$9.56
16" \$9.78	19" \$9.53	22" \$11.74	25" \$11.06
28" \$11.64	31" \$13.52		



One pair of hinges for standard cabinets

TO6552H \$3.85



One pair of hinges for frameless cabinets

TO6552ETH \$7.01

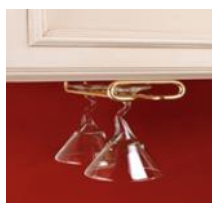
Wire Accessories



Chrome tray and lid divider will organize your baking sheets, dishes, or pans. The divider screws into the cabinet bottom and back panel. Both units require a cabinet depth of 20".

RV-597

12 $\frac{1}{8}$ " tall	\$11.40	18 $\frac{1}{8}$ " tall	\$11.82
-------------------------	---------	-------------------------	---------



Stemware holder mounts to the underside of your upper cabinets. Unit is 4 $\frac{1}{4}$ " wide X 1 $\frac{1}{2}$ " tall and is available in a chrome or satin nickel finish.

RV3150

11" deep	\$7.67	16" deep	\$9.37
18" deep	\$10.50	Satin nickel finish	adds \$3.91



Three-prong towel rack offers 12" pull-out extension. Overall size is 5" wide X 17 $\frac{3}{4}$ " long X 1' tall and includes mounting screws.

MRV56347

White	\$20.25	Chrome	\$22.48
-------	---------	--------	---------

Slides & Hardware



Top quality epoxy-coated slides from Julius Blum have a 100-pound static and 75-pound dynamic load rating. Synthetic rollers have a smooth roll and requires 1/2" clearance on each side. Set includes one left and one right rail, mounting hardware not included.

HB2322

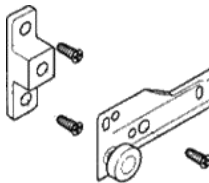
9 3/4"	\$11.95	11 3/4" - 21 3/4"	\$6.95	23 3/4"	\$11.95	25 3/4"	\$15.95
--------	---------	-------------------	--------	---------	---------	---------	---------



Blum full extension slides offer total shelf access with 1 1/4" over-travel. Features captive right-hand profiles with 1/2" side clearance. Smooth-running synthetic rolls on tempered steel axles provide quiet and smoothing rolling action. Will work with full-shelf L brackets (not included) but **cannot** be used with rear mount sockets.

HB430

9 3/4"	\$15.51	11 3/4" - 15 3/4"	\$24.09	17 3/4"	\$24.61	19 3/4"	\$25.24	21 3/4"	\$25.83
23 3/4"	\$29.64	25 3/4"	\$36.13	27 3/4"	\$38.46	29 3/4"	\$43.53	31 3/4"	\$45.09



Euro spacers are for framed and frameless cabinets with holes for adjustable shelves that are 32mm (approx. 1 1/4"). Spacers come with the screws to attach the spacers to the cabinet and to attach the slide to the spacers.

ESPA

1/2"	\$0.81	1"	\$0.81	1 1/2"	\$1.39
3/4"	\$0.84	1 1/4"	\$1.35		



Spacers for side and half-shelf mounts, screws not provided.

Available in 1/8", 1/4", 3/8" and 1/2".

SSPACER \$0.39



Replace your plastic shelf clips with a much sturdier option.

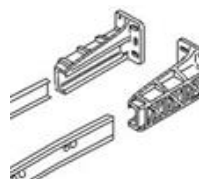
Available in 1/4" and 5mm (about 3/16")

SHELF CLIPS \$0.29



Universal drawer slide bracket for installing Blum slides can be used for 3/4" and full extension slides. Includes two slide mounting screws.

HB295 \$2.85



Blum rear mount sockets for 3/4" and soft-close slides. Set includes one left and one right socket; screws not included.

HBRMS \$1.95



Plastic door protectors protrude about 1/16" more than the slide and helps to prevent door damage. Protector and one screw are included for each shelf ordered, however, if you wish to order this item by itself, one #6 screw is not included.

HGRDP \$0.34

**Shelves That Slide
4125 W. Fortune Dr.
Phoenix, AZ 85086**



"We Make Your Life Easier!"

Shelves That Slide

1-800-598-7390

www.ShelvesThatSlide.com

