

**July
2018**

Shelves That Slide
www.ShelvesThatSlide.com
1-800-598-7390



"We Make Your Life Easier!"

Product Catalog
Installation and measuring guide included



Kitchen Accessories

- Custom Pull Out Shelves
- Trash Systems
- Lazy Susans
- Tip out Trays
- TV Shelves
- Bread Boxes
- Blind Corner Systems
- Tray/Lid Dividers

ROC#139769

Contents

Policies	1
Shelf Construction	2
How To Fit Your Pullout Shelves	2
Mounting Styles	3
Installation Guide	4
Custom Pullout Shelves	6
Pre-Made Pullout Shelves & Narrow Pullouts	7
Drawer Organizers	8
Trash & Recycle Systems	9
Lazy Susans	11
Blind Corner Systems	12
Tip-Out Trays	13
Hardware, Slides, & Wire Accessories	14

Policies

Ordering

The fastest way to order is online through our website. Just go to www.ShelvesThatSlide.com and click on online store. Our secure server will safely transmit your payment and order information. You may also call us toll free 1-800-598-7390 or you can fax us your order at 623-780-9815. You may also mail your order to us along with your payment.

Payment

We accept Visa, MasterCard, money order or a personal check. Please note that personal checks will delay your order until the check clears.

Shipping

Our pull out shelves are all custom made and usually ship in two to three weeks from the date the order is received. Our standard and economy shelves ship within one week and most other products ship in two to three days unless otherwise noted. Available shipping methods are UPS ground or 2nd day air. You can place your order online at www.shelvesthatsslide.com or call us at 1-800-598-7390. The online store will calculate the shipping based on your order and your zip code.

Return Policy

In the event that you find the need to return any of our products a **Return Authorization is required for all returns obtained via telephone (1-800-598-7390) or by email (sales@shelvesthatsslide.com)**. All items must be returned in the original condition and the original packaging, with a minimum 25% restocking fee applied. We want to make sure the return process goes as smooth and efficient as possible.

If the error is our fault we will replace the item and include a prepaid return label.

For more information on our Return Policy please visit our website. www.ShelvesThatSlide.com

Warranty

See our website for our warranty information. www.ShelvesThatSlide.com

Cancellation

If you decide you need to cancel an order for our custom pull out shelves for any reason, there will be a cancellation charge at up to 25% depending on how far into production we are. If you cancel an order before we have started production there will not be a cancellation fee.

The bottom line is; we aim to please and we will do what we can within reason to make sure that you are a satisfied customer. We have been in business for 25 years, providing pantry pullout shelving and kitchen cabinet accessories such as lazy susans, trash systems, and tip out trays. We also have TV sliders, TV swivels and sliding trash systems to help organize your life. We feel we build the top quality pull out shelf on the internet and we want to be the number 1 pull out shelf company. We have found our customers to be some of the best people around and we feel you deserve the best kitchen sliding pullout shelf, kitchen pantry organization products and service available.

Shelf Construction

Premium Shelves

We use 9 ply Baltic Birch for the front, back and sides of our premium quality pull out shelves. The bottom is 1/4" MDF with a vinyl covering. The bottom is cut into a dado in the birch front, back and sides. The corners utilize rabbet joints to provide extra strength. Our shelves have a lacquer finish and are installed on 100 pound capacity Blum 3/4 extension slides. Full extension slides are available but not always recommended. We find the 3/4 extension slides work great for most lower kitchen cabinet storage, they are easier to install and there are more mounting options available.

Economy Shelves

Our economy shelves are made of 5/8" thick melamine with your choice of maple or oak hardwood fronts. They have a 2" tall rear plywood strip. The maximum width for the economy shelves is 24". The exception is when they will be used for a keyboard tray

New Line Shelves

We use 9 ply Baltic Birch for the front, back and sides of our new line pull out shelves. The bottom is 1/4" Birch plywood. There are no rabbet joints, dados or lacquer used in our standard shelves. We use the same Blum 3/4 extension hardware as our Premium shelves. The maximum width for our standard shelves is 24"

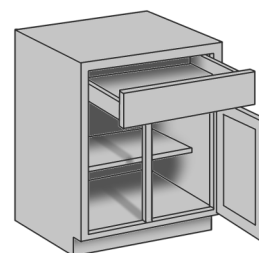
Full Extension Slides

The standard slides included are 3/4 extension. We find these work best for most kitchen cabinets. Full extension slides are available. There is an up charge for full extension slides, they are more difficult to install and they reduce the available mounting styles. The full extension slides wrap around the bottom of the shelves just like our 3/4 extension slides to give support where needed. We do not use ball bearing slides as they tend to gum up over the years and then can lose the ball bearings.

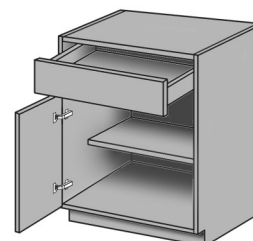
How to fit your pull out shelves

Cabinet Style

There are two basic styles of cabinets. Traditional framed cabinets and Euro style frameless cabinets. Framed cabinets have a hardwood front frame that covers the front of the cabinet's sides and top and bottom. The doors and drawers close on this face frame and usually you see the frame between the cabinet doors and drawers. Frameless cabinets have no front frame. The front edge of the cabinet is the side and top and bottom. The main difference when installing shelves is the L brackets sit behind the face frame on framed cabinets where there can not on frameless cabinets. If you have a frameless cabinet with one door you will either need to remove the L brackets and mount the slide directly to the sidewall or deduct 1/4" from the opening dimension to allow for the L brackets. There are special spacers made for frameless cabinets for side mounting the shelves.



Framed



Frameless

Slide type

There are two types of slides available, the standard 3/4 extension and full extension. The 3/4 extension extend approximately 3/4 of the length of the slide. The full extension slides extend the length of the slide plus 1"

Measuring

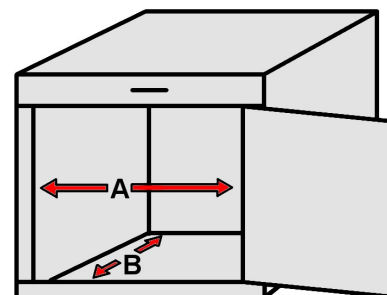
Width "A"

There are two dimensions needed when ordering pull out shelves, the cabinet opening (A) and the cabinet depth (B). Dimension A is the clear cabinet opening width. We make the widths in 1/16" increments so careful measuring is a must. The clear cabinet opening is the cabinet opening minus anything that sticks out into the opening such as a hinge or the door itself. The upper shelf is often wider than the lower one as it does not need to clear the hinge.

Depth "B"

The depth should be measured from the back of the cabinet face frame to the back wall. Make sure to look for anything in the back of the cabinet that will reduce the depth such as water or gas lines etc. The cabinet depths are made in 2" increments to match the length of the slide hardware. We usually refer to the 21 3/4" deep shelf as 22", and 19 3/4" as 20" etc. Our sliding shelves come in depths from as small as 10" to as deep as 36". Shelves with a depth of 24"-26" will come on 22" deep hardware. Shelves with a depth greater than 26" will have an extra charge, and has to have Full Extension slides.

Most kitchen cabinets take the 22" depth shelves, bathrooms are usually 20".



Mounting Styles

There are four methods of mounting. The easiest and most common method is the base mount. The base mount is for mounting to an existing shelf or the cabinet base, the slides will come with L brackets. If you have an upper shelf that is only 8" to 12" deep you can use the half shelf mount. The half shelf mount comes with L bracket on the rear of the shelf and the front of the slides are attached to the cabinet face frame or the sides. If you do not have an existing shelf to mount to you will need to use either the rear mount or side mount methods.

Base shelf mount

This method works for both full extension and 3/4 extension slides. For frameless cabinets with one door it will be necessary to either remove the L brackets on side of the cabinet without the hinges and attach the slides directly to the cabinet sidewall or you need to deduct 1/4" from the clear opening width to allow for the brackets.



Half shelf mount

If you have a shallow shelf in the back of your cabinet then the half shelf mount should be your choice. The half shelf mount works best with 3/4 extension slides. Full extension slides can be used but the front of the slides will need to be side mounted which can not always be done. Make sure to measure the opening width at the height of the half shelf and not at the bottom where the hinge is. Frameless cabinets with one door will need the L bracket removed and the slide mounted directly to the sidewall on the side without the hinge.



Rear mount

If you have no existing shelf one option for adding a sliding shelf is the rear mount sockets. This mount uses sockets that attach to the back of the slides and screw into the cabinet's back wall. The back wall must be thick enough to support the slides. The rear mount sockets will not work with full extension slides. For shelves 23 3/4" and 25 3/4" deep shelves you will need deeper slides which will be an extra charge.

Side mount

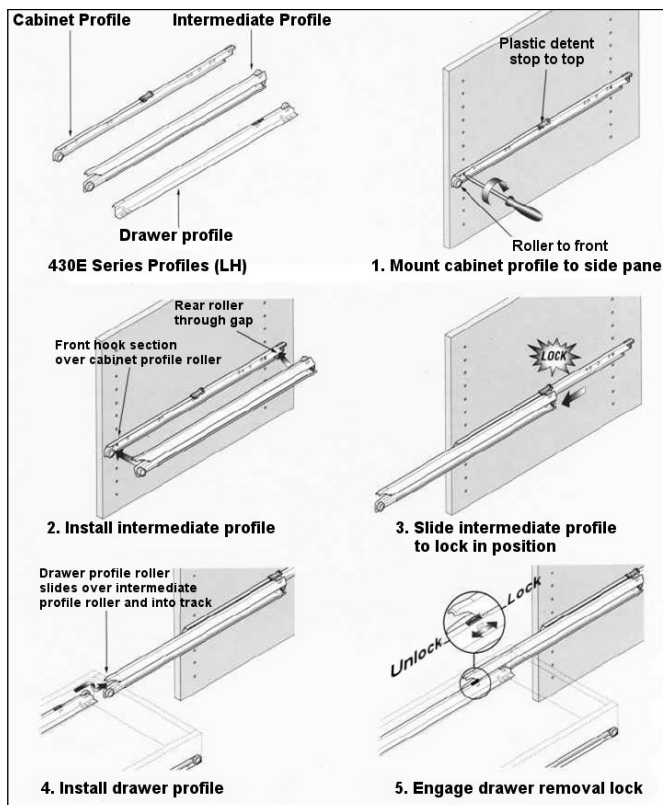
The other mounting option for cabinets with no shelf to mount to is side mounting. Side mounting attaches the slides to the cabinet sidewalls using spacers or wood buildup. If you are installing multiple shelves such as in a pantry the wood buildup may be your best choice. We have standard spacers available in 1/8", 3/8" and 1/2" widths. There are special spacers made for Euro style cabinets with adjustable shelf holes that are spaced 32mm apart (about 1 1/4"). The Euro spacers are available in 1/2" to 1 1/2" widths in 1/4" increments.

Slide basics

The back of the shelf is the end with the wheels. The front of the cabinet part of the slides has the wheel. On 3/4 extension slides there are two parts for each side. The shelf member comes attached to the shelf and the cabinet members will be wrapped together. The right side of the slides are the control side. Both parts of the right side slides have the metal bent so that the wheel is captive when it is sliding. The left side slide members are flat and allow the slides some tolerance. When you are installing the shelves you should look at the left side slide when checking adjustment. Any problems with slide alignment will show on the left side.

Full extension

Full extension slides have three parts for each side. A cabinet profile, a drawer profile and the intermediate profile. The cabinet and drawer profiles have plastic locking tabs. Tip the intermediate profile on to the cabinet member as in figure 2. Extend the intermediate profile to install the drawer. Remember full extension slides will not work with rear mount, they are not recommended for half shelf mounts and they are more difficult to assemble and install.



Full extension slides

Installation Guide

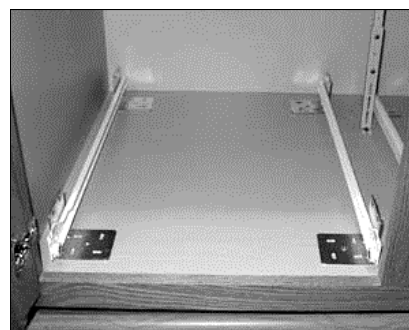
Full shelf installation

Secure the shelf

The first thing you need to consider is the existing shelf permanent or is it adjustable. If it is a permanent shelf you can go straight to installing the slides. If it is adjustable you need to look at two things. The first is what are the clips or pins that are holding the shelf up made of? If they are plastic you need to replace them with metal clips or pins. The front mounting of the shelf will be subjected to twice the weight it is now exposed to when to extend a loaded shelf. The second consideration goes right along with the first in that when the loaded shelf is extended it will want to lift up in the back. This is easily remedied by place a couple of screws in either the back or the side walls (which ever is thicker, but don't go through to an exposed wall) just above the existing shelf and leave the head sticking out far enough to hold the screw down.

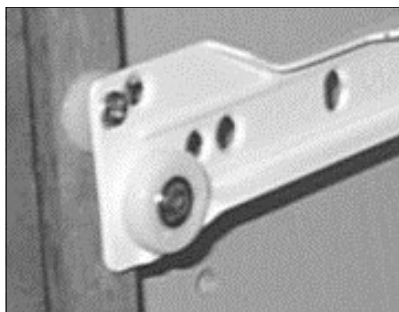
Installing the slides

For a full shelf installation you should have two "L" shaped brackets on each cabinet slide. The wheeled end of the cabinet part of the slide is the front. Set the slides onto the existing shelf or cabinet base at the approximate width of the sliding shelf. A customer suggested using a piece of masking tape rolled over or a piece of 2 sided tape and attach it to the bottom of the brackets. Engage the shelf slides into the cabinet slides by setting the wheeled end of the shelf slide over the wheeled end of the cabinet slide. The most important side to get in place is the right side. You can always slip the left side into place after getting the right side in properly. Insert the shelf fully into the cabinet and align the front of the shelf for squareness and proper set back. The proper set back depends on your cabinet depth but it is usually about 1/2" to 3/4" back from the inside edge of the cabinet face frame. Get your screwdriver ready! When you have the shelf adjusted press down slightly and slide the shelf forward just far enough to expose the rear brackets. Insert a screw in one of the slots in the right rear bracket. Use the hole that goes side to side so you can adjust it latter, tighten moderately. Now slide the shelf back into place and check the alignment. When it is adjusted properly slide the shelf out again to expose the rear bracket and place a screw in the opposite side slotted hole in a slot that goes from left to right and tighten moderately. Again slide the shelf in and check alignment. If all is well you can carefully slide of the shelf without disturbing the position of the front brackets. This may take a couple of tries. Install screws in the front brackets the same as you did for the rear brackets. Insert the shelf again and check alignment. Remember to pay careful attention to the left side slide if the gap is too large in the rear the shelf will roll great but as soon as you add weight you will get a bump when you slide it out. After you get everything aligned you can remove the shelf and install a screw in the center hole of the bracket to lock it in place, two screws per bracket is all that is needed. Congratulations your shelf is done!!! Well almost, see plastic thing.

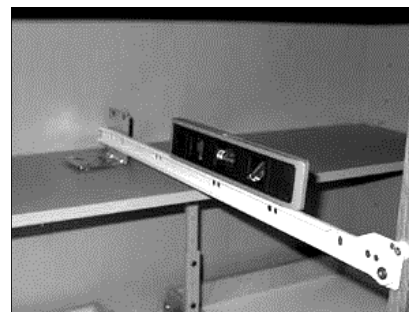


Half shelf

Half Shelf installations will not work with full extension slides. The second method of installing sliding shelves is the half shelf method. You will need a small level, preferably one with a magnetic strip on one side. Check the existing shelf to make sure it is secure and can not lift up. The slides for your half shelf installation will have one metal "L" shaped bracket mounted toward the rear. The end with the wheels is the front! If you have brackets in the rear and front, the front ones will not be needed and should be removed. Set the rear bracket on the existing shelf and place the front edge of the slide against the cabinet face frame, back about 3/16" from the front.



Place your level on the slide and level it. When you have the slide level mark the location of the front hole in the slide. You can then measure the height and make a corresponding mark on the other side face frame. It is best to drill a small pilot hole to prevent splitting. After you have the front of the slides attached you can set the shelf in place by lifting the wheels on the rear of the shelf slides over the wheels on the front of the cabinet slides. Insert the shelf all the way into the cabinet and align the shelf to be square with the cabinet front. If there is too much space between the cabinet face frames you will need to insert spacers or washers to build out. You can request spacers from us in 1/8", 3/8", and 1/2" sizes.

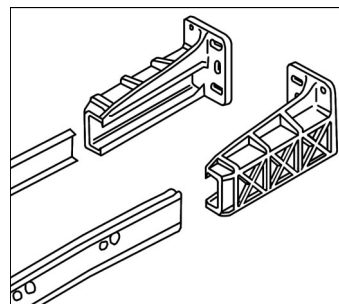


Installation Guide Continued..

Check the alignment of the left side slide and when it is properly aligned press down slightly on the shelf and extend it far enough to see the rear bracket. Place a screw in one of the slotted holes and tighten moderately. Reinsert the shelf and check slide alignment. When alignment is correct repeat the process of extending the shelf and insert a screw in the left bracket. Again insert the shelf and adjust as needed. When everything is aligned extend the shelf again and place a screw in the each center hole of the bracket to lock it in place. Congratulations your shelf is done!!! Well almost, see plastic thing.

Rear mount

The first step is to determine the height that you want the shelf. Make a mark on both cabinet face frames for the bottom of the shelf. Insert the cabinet slides partially into the plastic sockets (you must have specified a rear socket installation when ordering) note the brackets are different for left and right sides. Attach the front end of the slides (the end with the wheels) to the cabinet face frame where you marked. You will need to push the slide slightly against the back wall of the cabinet to get the socket seated to the needed depth. Install the shelf by lifting the rear end of the shelf slides (the end with the wheels) over the wheels on the front of the cabinet slides. Slide the shelf in completely and align it to be square with the front of the cabinet. Now comes the fun part. Make a line on the back wall to mark the position of each slide for the horizontal placement. You can now remove the shelf and place a level on the cabinet slide. Align the slide with the previous line that you made and level the height. Now you can either install one screw in the socket or mark another line for the vertical position. Repeat this process for the other side and after you have one screw in each socket reinstall the shelf and check for proper operation. Once you have the shelf adjusted, install at least one more screw in each socket. If you are having trouble getting the shelf to slide smoothly make sure the slides are parallel to each other and not twisted. Congratulations your shelf is done!!! Well almost, see plastic thing. Rear mount sockets will not work with full extension slides. Also they will not work with shelves deeper than 21 3/4" unless longer slides are used.

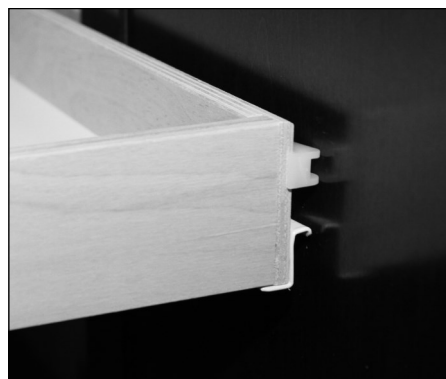


Side mounting

The last mounting method is side mount. We can provide spacers to install the cabinet slides to the cabinet side walls. The problem is the cabinet side walls are usually not more than 1/2" thick and there is about 1" of space or more that needs to be spaced out. Leverage will lead to this being a weak installation. However if you can install vertical strips of wood on both sides (two on each side, one near the front and the other near the back) that provide the proper filling to match the space behind the cabinet face frame, a side mount installation can be the strongest and most space efficient installation. It is best to use a piece of wood the same thickness as the space behind the face frame that runs from the bottom of the cabinet to above the height that you want the shelf installed. You can glue and screw this piece of wood in place to make a secure attachment. After the wood is installed you can measure up and make a mark where you want the slides installed. Simply screw the slides in where marked and you should be able to install the sliding shelf. Just lift the rear end of the shelf slides (the end with the wheel) over the wheels on the front end of the cabinet slides. Insert the shelf fully and check for alignment paying careful attention to the left side alignment, adjust as needed. Congratulations your shelf is done!!! Well almost, see plastic thing.

Door Protector (Plastic Thing)

Finally we come to that white plastic thing. That thing is a door protector. There is one door protector per shelf included for shelves up to 21" wide and two for larger drawers, more door protectors are needed for the economy shelves due to the extended front wood trim. The door protector is mounted to the side of the shelf. The purpose of the door protector is of course to protect the door. The plastic sticks out about 1/16" more than the drawer slide to keep you from scratching the door in case it is not opened fully before sliding out the shelf. Just screw the door protector to the side of the shelf (one screw). Watch for hinge clearance and if the door has a recessed panel make sure you mount the door protector as low as possible. The door protectors will not work on standard height shelves with full extension slides. Fortunately the front of the full extension slides is rounder than the 3/4 extension so the pullouts do not need them as badly. Congratulations, you have completed your installation. Please browse our catalog and when you are done please pass it on, your friends and family will thank you!



Disclaimer

This page is offered as a guide for installing a pull out shelf and it is not intended to offer every detail for every possible installation. It is expected that the home improvement do-it-yourselfer has sufficient knowledge as to judge the soundness of their installation of kitchen and bathroom shelves.

Pull out shelves

Now with Free Shipping on orders \$500 or more!*

Please read our measuring and installation guides before ordering. Make sure to specify mounting style and slide type. Top quality pull out shelves with 100 pound capacity, lifetime warranty, manufacturer direct price custom made for your cabinet, door protectors included. The 3/4 extension slides come standard and work great for most kitchen storage. Hardware for requested mounting style included. Full extension slides are available for all custom shelf styles. Full ext. slides add \$17 to the shelf price and are more difficult to install than the 3/4 slides. Shelves from 21 3/4" to 25 3/4" deep will be on 22" slides.

NOTE: Shelves with depths that are 27 3/4"—35 3/4" are only available with Full Extension Rails (See website for shelf size limitations and specifications.)



AS23SS Custom pull out shelf 2 3/8" tall

\$49.95

Our most popular shelf, works great for cans to pots and pans. The shallow sides allow you read labels yet tall enough to hold your items in place.

Opening widths in 1/16" increments: 6" to 39"

Add \$6 for widths over 21", add \$12 for widths over 30"

Standard depths in 2" increments: 9 3/4" to 35 3/4" deep
25 3/4"

Add \$10 for 9 3/4", add \$7.50 for 23 3/4", and add \$12.50 for 25 3/4"



AKDR632 Kitchen Drawer Replacement 3 1/2" tall

\$59.95

This shelf fits great where your kitchen drawers used to go. Works perfect for cutlery, pots, pans, to measuring spoons. Just like our 2 3/8" shelf but made to fit as your kitchen drawers.

Opening widths in 1/16" increments: 6" to 35"

Add \$8 for widths over 20", add \$15 for widths over 26"

Standard depths in 2" increments: 11 3/4" to 23 2/3 deep

Add \$7.50 for 23 3/4"



AM47SS Medium high pull out shelf 4 7/8" tall

\$69.95

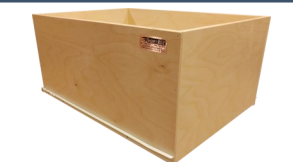
When you need a little height our medium high does the trick. Great for boxed foods in pantries or if you want to keep your plastic ware more contained.

Opening widths in 1/16" increments: 5" to 35"

Add \$12 for widths over 16", add \$15 for widths over 26"

Standard depths in 2" increments: 9 3/4" to 35 3/4" deep

Add \$10 for 9 3/4", add \$10 for 23 3/4", and add \$15 for 25 3/4"



AT97SS Tall pull out shelf 9 7/8" tall

\$89.95

Great for soda bottles, paper towels or even do it yourself trash systems. Can be a bit tricky to install.

Opening widths in 1/16" increments: 5" to 35"

Add \$12 for widths over 16", add \$18 for widths over 25"

Standard depths in 2" increments: 9 3/4" to 25 3/4" deep

Add \$10 for 9 3/4", add \$15 for 23 3/4", and add \$20 for 25 3/4"



AS2373 Slant side pull out shelf 2 3/8" to 7 3/8" tall

\$79.95

Perfect for your pantry the short front gives you access while the tall backs keeps items like bottles or vases in place.

Opening widths in 1/16" increments: 5" to 32"

Add \$11 for widths over 16", add \$19 for widths over 24"

Standard depths in 2" increments: 9 3/4" to 25 3/4" deep
25 3/4"

Add \$10 for 9 3/4", add \$12.50 for 23 3/4", and add \$17.50 for 25 3/4"



ABD73SS 7 3/8" tall bread drawer

\$99.95

Sliding top keeps bread and pastries fresh for longer. The new bread box!

Opening widths in 1/16" increments: 4" to 26"

Standard depths in 2" increments: 9 3/4" to 25 3/4" deep

Add \$10 for 9 3/4", add \$15 for 23 3/4", and add \$20 for 25 3/4"



AS58EWH Economy pull out shelf

75 pound capacity

\$32.95

Less expensive shelf with no sides, great for computer and video storage, will not work well with half shelf mount. No door protectors needed. Includes Oak or Maple accents of your choice!

Opening widths in 1/16" increments: 6" to 26"

Add \$6 for widths over 14", add \$12 for widths over 20"

Standard depths in 2" increments: 10 1/4" to 26 1/4" deep

Add \$10 for 10 1/4", add \$5 for 24 1/4", and add \$10 for 26 1/4"



ASNL624 New Line pull out shelf

75 pound capacity

\$39.95

Less expensive than the premium shelves with the same great 9 ply Birch sides. 1/4" Birch bottom. No lacquer or joinery.

Opening widths in 1/16" increments: 5" to 26"

Add \$6 for widths over 14", add \$9 for widths over 20"

Standard depths in 2" increments: 9 3/4" to 25 3/4" deep
25 3/4"

Add \$10 for 9 3/4", add \$7.50 for 23 3/4", and add \$12.50 for 25 3/4"



ACSP Caddy Shelf add-on

\$32.95

The Caddy Shelf is an add on for our premium pull out shelves. It is designed for under sink cabinets where you want a second tier of storage but the pipes get in the way. The Caddy Shelf simply screws to the inside edge of one of the premium shelves that we offer. The unit height is 9 7/8" and installed height is about 11 1/4".

Caddy shelf is offered in 6" or 8" widths

Add \$4 for the 8" width

The depths are offered at 19 3/4" or 21 3/4" depths. The actual Caddy shelf depth will be 1/2" less than the listed depth

*Free Shipping only applies to orders \$500 or more, 10 Shelf Pack (see online), and Perfect Pantry Pack (see online). *Free Shipping only applies to US States excluding Alaska and Hawaii.

Rev-A-Shelf pull out shelves pre-made in two sizes



4W-DB12 **12" pull out shelf**
Measures 11" wide and 18 1/2" deep. Tray is 5 5/8" tall. Fits cabinets with a minimum opening of 12" and a depth of 19".

\$51.95

RV4DW-15 **15" pull out shelf**
Measures 14" wide and 18 1/2" deep. Tray is 5 5/8" tall. Fits cabinets with a minimum opening of 15" and a depth of 19".

\$57.35

Wire pull out shelves



Single tier wire basket system. Full extension slides are rated for 100 pounds when fully extended. Chrome finished wire basket provides sturdy support for your cookware. Includes hardware to install in your cabinet.

RV5WB1	9" wide x 18" deep	\$35.95	12" wide x 18" deep	\$38.95
	12" wide x 22" deep	\$47.95	15" wide x 22" deep	\$53.95
	18" wide x 22" deep	\$57.95	21" wide x 22" deep	\$63.95

Shelves are 7" tall and bottom mounting. Listed width represents the cabinet opening not actual shelf size. Minimum opening is 1/2" smaller than the listed width.

These **two tier** wire basket pull out shelves take care of your base cabinet storage needs. Heavy duty chrome wire baskets support your heaviest pots and pans. Full extension ball bearing slides rated for 100 pounds when fully extended. Comes with hardware needed to install in most cabinets. Unit is 19" tall and requires a minimum 19 1/4" opening height. Shelf height is fixed. Listed width represents the cabinet opening not actual shelf size. Minimum opening is 1/2" smaller than the listed width.

RV5WB2	9" wide by 18" deep	\$81.95	12" wide by 18" deep	\$89.95
	12" wide by 22" deep	\$99.95	15" wide by 22" deep	\$101.95
	18" wide by 22" deep	\$110.95	21" wide by 22" deep	\$119.95



18" deep units require at least 18 1/8" of cabinet depth. The 22" deep units require a cabinet depth of at least 22 1/8".

Mounts to cabinet base, face frame and rear wall



Cabinet fillers

These systems make use of the dead space behind filler panels. They do not come with the filler panel.



Base fillers

Perforated stainless steel panel comes with an assortment of pegs and hooks

434-BF-3SS 3" wide, 23" deep and 30" tall **\$239.95**

434-BF-6SS 6" wide, 23" deep and 30" tall **\$269.95**

3 adjustable shelves are great for storage of small items such as spices

432-BF-3C 3" wide, 11 1/8" deep and 30" tall **\$87.95**

432-BF-6C 6" wide, 11 1/8" deep and 30" tall **\$109.95**



Narrow wall cabinet pull outs

This unit is perfect for narrow wall cabinets. Contains one 3 tier pull-out on full extension over travel slides. Maple product, natural finish. Includes chrome rails.

Both units are 10 3/4" deep and 26 1/4" tall and require a cabinet 10 7/8" deep and 26 3/8" tall cabinet opening.

448WC	5" requires 5 1/8" opening	\$89.95
	8" requires 8 1/8" opening	\$99.95



Drawer organizers



Spice drawer insert Insert is custom cut to fit inside your drawer to neatly arrange and organize your small to medium size spice bottles. Drawer must be a minimum of 4" tall. Available up to 50" wide for drawers up to 21" deep. Removable for easy cleaning.

DODT50-21WH	4" to 8" wide	\$16.92	9" to 12"	\$21.92	13" to 16"	\$26.92
	17" to 20"	\$31.92	21" to 24"	\$36.92	25" to 30"	\$44.92
	31" to 36"	\$52.92	37" to 50"	\$60.92		

Specify inside drawer width and depth and we will cut the insert to fit your measurements

Wood spice insert Birch/Maple hardwood with a UV-cured coat finish that allows an acceptable match to any cabinet. Contains one tray insert that can be customized for various drawer sizes. Available in 16" and 22" widths. Both sizes are 19 3/4" deep and 1 1/2" tall

DORV4SD1-18	16" wide x 19 3/4" deep	\$44.95
DORV4SD1-24	22" wide x 19 3/4" deep	\$49.95

Unit comes stated size and you trim to fit your drawer.



Wood Cutlery tray insert Classic Birch/Maple Hardwood with a UV-Cured finish to ensure a match to any kitchen cabinet. Trim to fit with simple drop-in installation. Available in two sizes 14 5/8" wide (minimum size 8 1/4") and 20 5/8" wide (minimum size 14 1/4"). Both sizes are 22" deep and 2 1/8" tall. Minimum cut depth is 15 1/2"

DORV4WCT-1	14 5/8" wide	\$33.95
DORV4WCT-3	20 5/8" wide	\$37.95

Wood Utility Tray Insert Organize kitchen drawers with ease and style. This trim able wood tray is an acceptable match to any kitchen cabinet and requires a simple drop-in installation. Available in two sizes, 18 1/2" wide and 24" wide. Both units are 22" deep and 2 7/8" tall

DORV4WUT-1	18 1/2" wide	\$27.95
DORV4WUT-3	24" wide	\$36.95



Knife holder / Cutting board Replace your drawer with this combination knife holder cutting board. Uses your existing drawer front. Includes a removable cutting board with mineral oil treatment. Includes full extension ball bearing slides with mounting hardware. Three divided sections including unique 7 slot knife holder. Available in three sizes, 14 1/2" wide, 17 1/2" wide and 20 1/2" wide All sizes are 22 3/4" deep and 4 3/4" tall. Drawer front is not included

DORV4KCB-18	14 1/2" wide	\$154.95
DORV4KCB-21	17 1/2" wide	\$169.95
DORV4KCB-24	20 1/2" wide	\$184.95

Trim Able Knife Block with Divider Trim able knife holder with divider. This UV coated Maple system can be trimmed to fit your drawer. Provides up to 19 slots for knife storage. Has separate compartment for other utensils. Provides more storage than a traditional knife block. Simple drop-in installation saves valuable countertop space. Tray is 18 1/2" wide and can be trimmed as small as 3". Depth is 22" and can be as small as 8". The unit is 2.87" tall

DORV4WKB-1	\$49.95
-------------------	----------------



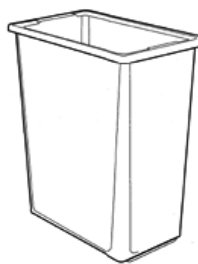
Trash and recycle centers

					
TR-814B	TR5349-15DM-1	TR4WCTM-12DM-1	TR4WCTM-1550DM-1		
					
TR12PB-LE	TR12PBS	TR12PB-50SWH	TR15PB2SWH	TR9PBWH	TR4WC-15DM1
					
TR18PB2WH	TR18PB1WH	TR5349-18DWH	TR80104-WH	TR80103-SS	
					
TR4WC-18DM2	TR5349-21	TR87004-WH	TR14PBSWH	TR4WCTM-27-4	

Replacement Containers



27 quart container
TR1024W-52
\$19.95
7 pounds
11 3/8" wide x 11 3/8" deep x 17 3/4" tall



30 quart container
TR6700-61WH
\$13.95
7 pounds
9 3/8" wide x 15 3/8" deep x 17 7/8" tall



35 quart container
TR35-52
\$18.95
7 pounds
14 7/8" wide x 10 1/2" deep x 17 7/8" tall

Item #	Price	Capacity	Opening Width	Depth	Height	Style	Exten- sion	Door Mount	Comments
TR-814B	\$34.95	20 qt	8 5/8"	15 7/8"	15 7/8"	Base Mount	Full Ext	no	Perfect for your vanity
TR5349-15DM-1WH	\$201.95	35 qt	10 7/8"	22 1/8"	20"	Base Mount	Full Ext	Included	Ultimate single container system
TR4WCTM-12DM-1	\$86.95	35 qt	12"	22"	17 7/8"	Side Mount drop in		Included	Rear basket for extra storage
TR4WCTM-1550DM-1	\$99.95	50 qt	12"	22 5/8"	21 5/8"	Side Mount drop in		Included	Note: Extra height required
TR12PB-LE	\$75.95	35 qt	10 5/8"	16 1/8"	20 1/2"	Base Mount	Full Ext	no	Touch top lid
TR12PBWH	\$45.95	35 qt	10 5/8"	22"	19 1/8"	Base Mount	Full & 3/4	Optional TRDMKIT	
TR12PB-50SWH	\$89.95	50 qt	12 1/4"	22"	24 1/4"	Base Mount with lid	Full Ext	Optional TRDMKIT	Note: Extra height required
TR15PB2SWH	\$75.95	54 qt	12 1/4"	22"	19 1/2"	Base Mount double bin	Full Ext	Optional TRDMKIT	Rubbermaid bins smallest double
TR9PBWH	\$45.95	30 qt	10"	22"	20"	Base Mount	3/4	Optional TRDMKIT	
TR4WC-15DM1	\$145.95	35 qt	12 1/2"	18 3/4"	20 1/2"	Base Mount	Full Ext	Included	Wood system with polymer bins
TR18PB2WH	\$77.95	70 qt	14 5/8"	22"	19 1/4"	Base Mount double bin	Full Ext	Optional TRDMKIT	Dual 35 qt bins
TR18PB1WH	\$57.95	35 qt	15"	22"	20"	Base Mount	3/4	Optional TRDMKIT	Shallow bin for under sink
TR5349-18DWH	\$215.95	70 qt	15"	22"	20"	Base Mount	Full Ext	Included	Premier quality aluminum frame
TR80104-WH	\$74.95	15 liter	15 1/2"	10"	16 1/2"	Pivot door mounted	Pivot	Standard	Lid and removable bin
TR80103-SS	\$102-95	15 liter	15 1/2"	10"	16 1/2"	Pivot door mounted	Pivot	Standard	Lid and removable bin
TR4WC-18DM2	\$155.95	70 qt	15 1/2"	22"	20 1/2"	Base Mount wooden	Full Ext	Included	Wood system
TR5349-21	\$239.95	100 qt	15 5/8"	22"	22 3/4"	Base Mount aluminum	Full Ext	Included	Tall opening ultimate quality
TR87004-WH	\$135.95	20 qt	15 3/4"		16"	Pivot door mounted	Pivot	N/A	Pivot without lid
TR14PBSWH	\$59.95	20 qt	14 5/8"	16"	16 3/8"	Base Mount rear storage	Full Ext	Optional TRDMKIT	Bathroom cabinets
TR4WCTM-27-4	\$159.95	108 qt	24"	22 5/8"	18"	Front Side and Rear	Full Ext	No	Four 27 qt bins

Lazy Susans

Two layer full circle 18", 20", 24", 28", 32"

Designed for use in corner wall and base cabinets. Features two rotating polymer trays, both trays turn together. Shelf heights can be moved on the post by locking screws that allow adjustment. Ribbed tray design provides greater strength and stability. Fits cabinets heights from 24" up to 31". #32" unit fits 26" to 32" tall. Easy installation. Kit includes two trays, telescoping center shaft, top and bottom pivots, and screws.



18" diameter	FCLS6012-18		
White	\$49.95	Almond	\$49.95
20" diameter	FCLS6012-20		
White	\$52.95	Almond	\$69.95
24" diameter	FCLS6012-24		
White	\$55.95	Almond	\$63.95

28" diameter	FCLS6012-28		
White	\$75.95	Almond	\$69.95
32" diameter	FCLS6072-32		
White	\$135.95	Silver	\$143.39

Three layer full circle 18" diameter

Three tray Set fits cabinet heights from 36" to 42". Three trays to maximize your storage. Shelf heights can be moved on the post by locking screws that allow adjustment. Ribbed tray design provides greater

FCLS6013-18	White	\$75.95
	Almond	\$75.95

strength and stability. Easy installation. Kit includes three trays, telescoping center shaft, top and bottom pivots, and screws.



D Shaped 2 tier 20" diameter

Features dependent shelf rotation. Ribbing allows maximum support and deflection. Features 1 1/4" high tray retainer. Utilizes a standard 3/4" diameter lower shaft with telescoping post. Fits cabinets from 26" to 32" high. Includes two shelves, telescoping center shaft, mounting hardware and screws. White polymer 20" diameter trays.

DSLS7012-20WH	White	\$54.95
----------------------	-------	----------------



D Shaped 3 tier 20" diameter

Features dependent shelf rotation. Features 1 1/4" high tray retainer. Utilizes a standard 3/4" diameter lower shaft with telescoping post. Fits cabinets from 37" to 46" high.

Includes three shelves, telescoping center shaft, mounting hardware and screws. Polymer 20" diameter trays.

DSLS7013-20	White	\$79.95
	Almond	\$79.95



D shaped 5 tier pantry system 22" diameter

D shaped lazy susan to fit in 24" deep pantry cabinets. The five 22" trays rotate independently and self locate within 30 degrees of proper resting position. Adjustable to fit in pantry cabinets with 56" to 62" internal height. 32 pound nominal load per shelf.

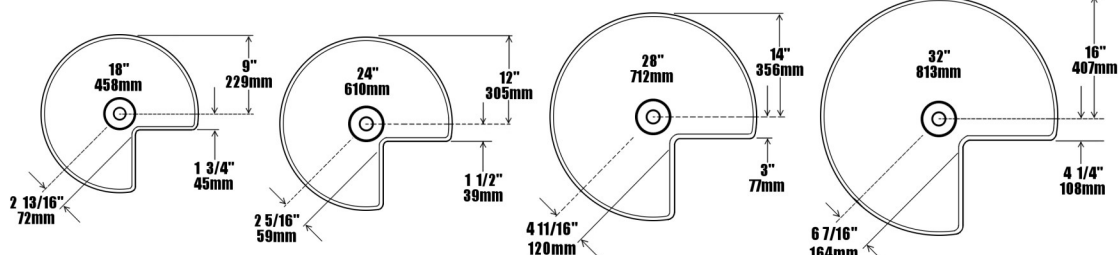
DSLS6265-22WH	
37 pounds	\$233.95



Kidney shaped two tier 18". 24". 28", 32"

Features independent shelf rotation. Exclusive cantilevered ribbing allows maximum support and deflection. Shelves can be relocated on post by loosening locking screws. Provides 15/16" clearance between the cabinet floor and the bottom shelf. Acetyl polymer bushings provide self lubricating bearing areas and quiet operation. Gravity centering positioned assembly provides centering from either side of the original position. Fits cabinets from 26" to 32" high. Includes two shelves, telescoping center shaft, mounting hardware and screws.

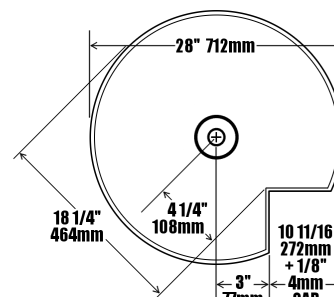
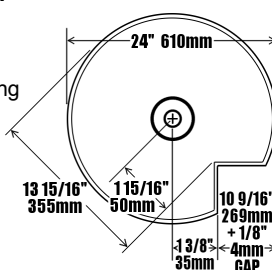
KSLS6472-18	18" White	\$77.95
	18" Almond	\$85.95
KSLS6472-24	24" White	\$71.95
	24" Almond	\$71.95
KSLS6472-28	28" White	\$84.95
	28" Almond	\$95.95
KSLS6472-32	32" White	\$97.95
	32" Almond	\$97.95



Lazy Susans Continued..

Pie cut for door mount 24", 28" diameter

Offers polymer components for quieter action. Single screw is used for adjustment of the doors with full 360 degree rotating alignment. Height adjustment is a snap with the thumb and forefinger with the height adjusting locking clip. Telescoping hardware is 24" long and extends to 31", or can be cut to fit smaller openings. Features 1" heavy wall tubing and engineered die cast and polymer components. Includes shelves, pivot, cam, telescoping post, hardware and instructions.



PSLS6942-24

24" White **\$52.95**

24" Almond **\$52.95**

PSLS6942-28

28" White **\$64.95**

28" Almond **\$64.95**

Blind Corner Systems

Strongest blind corner lazy susan unit available. Polymer bushings surround all rotating bearing areas for super quiet performance. Two mounting brackets are included to accommodate both frame and frame less cabinetry. Self closing roller design provides positive action positioning in both the open and closed positions.

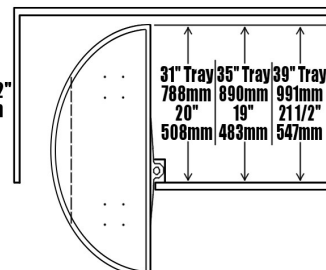
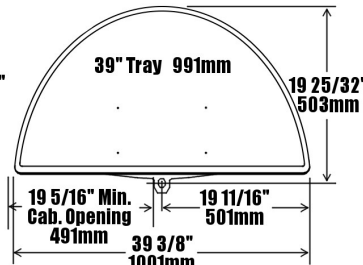
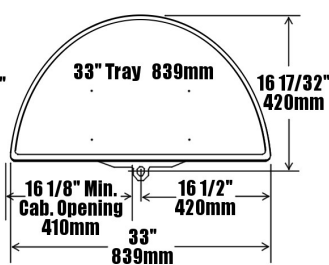
One pivot, one pivot and slide out

13 1/4" door opening	BC6862-31	White	\$144.95	Almond	\$164.95
16 1/8" door opening	BC6862-33	White	\$153.95		
19 1/4" door opening	BC6862-39	White	\$159.95	Almond	\$179.95



Two shelf, both pivot and slide

13 1/4" door opening	BC6882-31	White	\$153.95	Almond	\$153.95
16 1/8" door opening	BC6882-33	White	\$159.95	Almond	\$159.95
19 1/4" door opening	BC6882-39	White	\$174.95	Almond	\$174.95



Wire Blind Corner System

This Blind Corner Optimizer by Rev-A-Shelf lets you access that tricky blind corner cabinet. The corner optimizer is universal and will work on either a right or left handed door. Store kitchen items with ease with the four chrome baskets and full extension slides that allow the blind corner optimizer to be pulled completely out of the cabinet. This system comes with all of the necessary mounting materials for an easy installation. 15 3/4" Model requires a minimum 14 3/4" wide opening. 26 1/8" Wide X 20 1/4" Deep X 21" Tall. 17 3/4" Model requires a minimum 17 3/4" wide opening, 20 1/4" deep X 21" Tall.

15 3/4" Door Opening **RV5PSP15** **\$324.95**

17 3/4" door opening **RV5PSP18** **\$353.95**



Tip out trays

Tip out tray with tabs

An affordable alternative to standard tip out trays. With this 11" white molded polymer tray with tab stops you use your own standard hinges to create some extra space right where you need it most. Sold per tray. Hinges not included.

TO6561-11	11" wide	\$2.95
TO6561-14	14" wide	\$2.95



Tip out set with hinges

Are you tired of looking at those sponges and scrub pads on your counter? Have you ever lost a ring while doing the dishes? This tip out tray set includes 2 trays and 2 pair of hinges. One of the trays has a post to hold your ring while washing and a space for a sponge or scrub pad. Available in white and almond colors.

TO6572-11	11" wide	White	\$18.95	Almond	\$18.95
TO6572-14	14" wide	White	\$18.95	Almond	\$18.95



Custom fit tray set

Designed for a single large tray installation. This 36" tray can be cut to the exact size you need. End cap kit include glue to attach end caps. Keyhole mounting brackets are attached to the end caps and allow for easy installation and quick removal for cleaning. Includes 36" tray, one cap kit (2 caps), one pair of hinges (2 hinges), glue and mounting hardware. Tray dimensions are 3 5/16" tall in the back and 2" tall in the front. The tray is 2 7/16" deep.

TO6551-599	cut to fit	White	\$19.95	Almond	\$19.95
With extra hinges and end caps			\$30.95		



Slim fit tip out set Two trays and hinge

Made just for those tight areas this slim tray requires just 1 11/16" clearance. Great for use with large sinks or solid surface counters. Kit includes two white slim trays and 2 pair of hinges.

TO6542-11WH	11" wide	\$20.95	TO6542-14WH	14" wide	\$21.95
--------------------	----------	----------------	--------------------	----------	----------------

Slim tray components 36" tray only

Tray only - 36" slim polymer tray. Does not include hinges or end caps. Slim tray requires 1 11/16" depth.

TO6541-36	36" wide	\$11.95
------------------	----------	----------------

Slim tray components hinges and end caps

One pair of hinges and one pair of end caps for slim fit trays. No trays included.

TO6542-WH	\$11.95
------------------	----------------

Slim fit 36" tray, 1 or 2 pair of hinges and end caps

This set includes one white polymer 36" tip out tray, with 1 or 2 pair of hinges and 1 or 2 pair of end caps. Requires 1 11/16" clearance.

TO6541-50	1 pair of hinges & caps	\$18.95	2 pair of hinges & caps	\$30.95
------------------	-------------------------	----------------	-------------------------	----------------



Stainless Steel tip out trays

Sleek Simple design. Classic stainless steel trays feature smooth folded over edges with a protective polished finish. Includes one tray, requires hinges sold separately. Shipping weight 1 pound

TO6581-10SS	10"	\$7.95	TO6581-19SS	19"	\$8.95
TO6581-11SS	11"	\$7.95	TO6581-22SS	22"	\$10.95
TO6581-13SS	13"	\$8.95	TO6581-25SS	25"	\$10.95
TO6581-14SS	14"	\$8.95	TO6581-28SS	28"	\$10.95
TO6581-16SS	16"	\$8.95	TO6581-31SS	31"	\$10.95



Hinges

TO6552H	one pair for standard cabinets	\$3.95
TO6552ETH	one pair for frameless cabinets	\$6.49

standard



frameless



Hardware



ESPA

Euro Spacers

\$2.00

Euro spacers for framed and frameless cabinets with holes for adjustable shelves that are 32mm apart. 32mm is about 1 1/4". These spacers come with the screws to attach the spacers to your cabinet and to attach the slide to the spacers. Available from 1/2" to 1 1/2" in 1/4" increments

SSPACER Standard Spacers \$0.25

Spacers for side and half shelf mounts. These are available in 1/8", 3/8", 1/4" and 1/2". Screws are not provided.



HBRMS Blum Rear Mount Sockets \$1.95

Rear mount socket for 3/4 extension self closing Blum slides. Sold as a pair, one left and one right. No other hardware included.



HGRDP Plastic Door Protectors \$0.49

These door protectors protrude about 1/16" more than the drawer slides to help prevent door damage. We include these with our sliding shelves so if you are ordering shelves you do not need to order these. If you are only ordering the door protectors we will contact you with a shipping amount as the store will automatically give the quote. Requires 1 #6 screw to attach to your drawer or sliding shelf side, not included.



HB295 Universal Slide Mounting "L" Bracket

\$2.85

Universal drawer slide bracket for installing Blum drawer slides. Can be used with both 3/4 extension and full extension slides. Perfect for installing pull out shelves. Attach upside down to hang shelf from your desktop for a pencil drawer, writing tray or keyboard and mouse tray. Price is for one bracket with two screws to attach slide to bracket. No other hardware or instructions are included.

SHELF_CLIPS Metal Shelf Support Clips

\$0.29

Metal shelf support clips. Replace those plastic clips with these metal ones. Available in two sizes, 1/4" and 5mm (about 3/16")



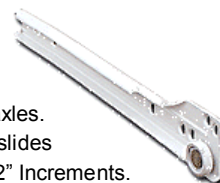
Slides

HB2322 3/4 Extension Drawer Slides

11 3/4"–21 3/4" long **\$5.95**

9 3/4" long **\$10.95** 23 3/4" long **\$10.95** 25 3/4" long **\$14.95**

Top quality epoxy coated slides from Julius Blum. These 3/4 extension slides have a 100 pound static and 75 pound dynamic load rating. They have a smooth roll and a self closing feature. The synthetic rollers are on tempered steel axles. Requires 1/2" clearance on each side. Available from 10" to 26", standard price is for 22" slides. Price is for a pair of slides consisting of one set left and one set right cabinet and drawer members. No mounting hardware is included. Only in 2" Increments.



HB430 Full Extension Drawer Slides 9 3/4"–17 3/4" long \$22.95 19 3/4"–21 3/4" long \$24.95

23 3/4" long **\$28.95** 25 3/4" long **\$34.95** 27 3/4" long **\$36.95** 29 3/4"–31 3/4" long **\$42.95**

Blum full extension runners offer total shelf access with 1 1/4" over travel. Because the side clearance is the same as the Blum 3/4 extension they can be swapped with no change in box size. Features captive right hand profiles with 1/2" side clearance. Smooth running synthetic rollers on tempered steel axles provide quiet, smooth rolling action. Intermediate drawer profiles lock for easy drawer installation. Steel construction with epoxy coating. Sold as a set with two each, drawer, intermediate and cabinet members. All the parts necessary for one pull out shelf. Will work with full shelf L brackets which are not included but are available separately. Only in 2" Increments.



Can not be used with rear mount sockets.

Wire Accessories

RV-597 Tray/Lid Divider \$5.95

Wire frame snaps into four nylon fittings, included, which screw into bottom and back panels. See through wire design cuts down search time. Snaps out for easy cleaning. Specs: Both units require 20" depth, 12" unit



is 12 1/8" tall, and 18" is 18 1/8" tall.

White **add \$0.00**

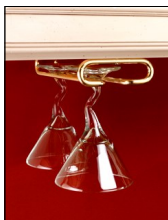
Chrome **add \$2.00**

12" Tall **add \$0.00**

18" Tall **add \$1.00**

RV3150 Stemware Holder \$6.99

Stemware holder mounts to the underside of your upper cabinets. 4 1/4" wide, 1 1/2" tall. Available 11", 16", and 18" depths. Standard finish is Chrome, but is also available in Satin Nickel as shown below.



Chrome **add \$0.00**

Sat. Nic. **add \$1.10**

11" deep **add \$0.00**

16" deep **add \$2.00**

18" deep **add \$2.50**

MRV56347 Pull Out Towel Bar \$18.95

Three prong towel rack. Offers 12" pull out extension. Overall size 5" wide X 17 3/4" long X 1 1/4" tall. Includes pull out rack and mounting screws. Available in white or chrome.



White **add \$0.00**

Chrome **add \$2.00**

Shelves That Slide
4125 W. Fortune Dr.
Phoenix, AZ 85086
www.ShelvesThatSlide.com



Shelves That Slide

1-800-598-7390

